

The Wexon logo is displayed in white, lowercase letters on a solid red rectangular background.

# INDUSTRIAL VALVES FOR PROFESSIONALS

---









# VALVES FOR DEMANDING INDUSTRIAL APPLICATIONS

Thanks to our extensive product range and solid expertise, we can provide comprehensive services to our customers across various industrial sectors. Our product portfolio offers solutions for both traditional and challenging conditions.

We import products from renowned top brands in the industry, whose quality and reliability can always be trusted. We have long-term principals and partners with whom we work closely. Our customers can be assured that we will solve even the most demanding applications to their best advantage.

## **Own valve assembly**

At our assembly point in Helsinki, we assemble and modify valve packages according to customer needs. While a major part of the valves are delivered from the factory already automated, our own assembly point serves our customers especially in urgent cases.

## **The most common types of valves available from stock**

Our warehouse stocks products from well-known manufacturers, and the most common industrial valves are readily available off the shelf. Our principals are ISO9001/14001/45001-certified manufacturers.

Learn more about our products on our website. Our professionals are happy to help you finding the right solution!

[wexon.fi](https://www.wexon.fi)

# INDUSTRIAL VALVES

## STAINLESS STEEL BALL VALVES

For demanding applications involving corrosive media or corrosive environment. Applications include the chemical industry, paper industry, machine construction, and commercial vehicles.

- ▶ Sizes DN8 – DN100
- ▶ Pressure classes PN16 – PN63
- ▶ 1-pc ball valves
- ▶ 2-pc ball valves
- ▶ 3-pc ball valves
- ▶ Weldable ball valves, with short and long welding ends
- ▶ Flanged ball valves
- ▶ V-port ball valves
- ▶ Fire Safe, TA-Luft, ATEX certified
- ▶ Also available in special materials such as Duplex



## 3-WAY BALL VALVES

Stainless steel 3-way ball valves for versatile industrial use. Choose L- or T-port configurations for mixing, directing, or distributing flows. Sizes 1/4" – 4".

- ▶ Sizes DN8 – DN100
- ▶ Pressure classes PN6 – PN63
- ▶ Body materials in brass, steel, or stainless steel
- ▶ Multiple sealing options
- ▶ L- and T-port configurations
- ▶ Manual and actuator operation



## BUTTERFLY VALVES

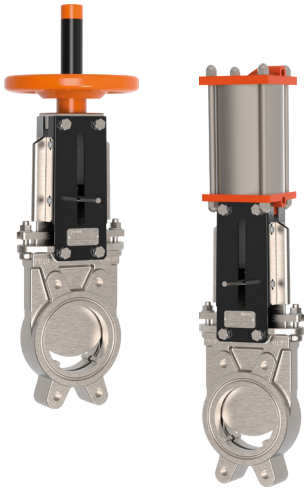
Rubber-lined butterfly valves are used in cold or hot water networks, and for isolating or regulating non-corrosive liquids. Eccentric butterfly valves are designed for operation in highly challenging environments requiring high safety, uninterrupted operation, and minimal maintenance. Applications include water applications, chemical, oil, natural gas, paper, bitumen, petrochemical industries, steel mills, and shipbuilding industries.

- ▶ Sizes DN25 – DN2200
- ▶ Pressure classes PN10 – PN40
- ▶ Rubber-lined butterfly valves
- ▶ Teflon-lined butterfly valves
- ▶ Metal-seated butterfly valves
- ▶ Wafer or lug type
- ▶ Eccentric butterfly valves, fire safe design
- ▶ Body materials include cast iron, steel, stainless steel, aluminum
- ▶ Numerous sealing options
- ▶ Hand lever or gear operated
- ▶ Pneumatic, electric, or hydraulic actuation





# INDUSTRIAL VALVES



## KNIFE GATE VALVES

Knife gate valves are used in applications such as wastewater treatment, mining, cement, steel, chemical, paper, and food industries, as well as in fire protection systems. A knife gate valve is used either fully closed or fully open, which is why it is known as a shutoff valve, not a control valve.

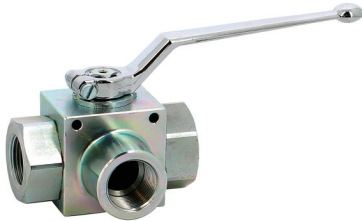
- ▶ Sizes DN50 – DN1200
- ▶ Wafer or lug type
- ▶ Body GGG40, AISI316
- ▶ Gate AISI304, AISI316
- ▶ Seals EPDM / NBR / FKM / PTFE / metal
- ▶ Operated manually or by pneumatic/electric/hydraulic actuators



## GATE VALVES

Wedge gate valves are primarily used as shutoff valves; the wedge inside the body either completely stops the flow or allows the medium to flow freely when the valves are open. When the wedge is raised, it forms a full bore, which prevents pressure loss. Multi-turn operation allows the valve to open and close gradually, preventing pressure surges from entering the system.

- ▶ Sizes DN50 – DN600
- ▶ Pressure classes PN10, PN16
- ▶ Body materials GGG40, stainless steel, carbon steel
- ▶ Threaded or flanged connection



## HIGH-PRESSURE VALVES

From our extensive range, we offer high-pressure valves suitable for water, oil, gas, and petrochemical applications.

- ▶ Sizes 1/8" – 2"
- ▶ Materials include stainless steel and carbon steel
- ▶ Seals PCTFE / PEEK
- ▶ Threaded connection, DK-Lok
- ▶ Operated manually or by actuator
- ▶ 3-way, L- and T-port configurations



# INDUSTRIAL VALVES

## GLOBE VALVES

Our range includes angle seat valves, both pressure- and motor-actuated. High-performance Asco angle seat valves are designed to provide reliable fluid management in industrial applications that control air, inert gases, water, oil, steam, hot water, and various auxiliary fluids needed in many industrial processes. The angle seat design is modular, robust, and durable. A comprehensive selection of body options, certifications, and diagnostics is also available for these valves.

- ▶ Sizes DN10 – DN65
- ▶ Pressure classes PN10 – PN16
- ▶ Body materials bronze, stainless steel
- ▶ Actuator materials PA or stainless steel
- ▶ Connections threaded, weldable, flanged, or Tri-Clamp
- ▶ Operated manually or by actuator



## CHECK VALVES

A check valve's purpose is to allow fluid, gas, air, or steam to flow in only one direction within a pipe or duct. It is used to automatically stop flow in the event of backflow. This is a critical component when it comes to protecting pumps within hydraulic systems, whether they are open (for suction or drainage) or closed (for circulation or pressure relief). Our selection includes various types of check valves with different mechanisms.

- ▶ Sizes DN8 – DN600
- ▶ Pressure classes PN10 – PN40
- ▶ Materials include brass, bronze, cast iron, stainless steel
- ▶ Multiple sealing options
- ▶ Connections include threaded, flanged, between flanges
- ▶ Types include swing, disc, or ball check valves



## ACTUATORS AND ACCESSORIES

We offer reliable actuators for the automation of ball, butterfly, and knife gate valves. We are happy to assist in selecting the right product.

- ▶ Single or double-acting pneumatic actuators
- ▶ 3-position, with position limit models
- ▶ Electric actuators
- ▶ Output is on/off contact information or 4–20mA, with an optional 0–10V
- ▶ Limit switches mechanical/inductive, ATEX certified
- ▶ Pneumatic/electropneumatic positioners
- ▶ Certifications include CE, UL, CSA, ATEX, Exd
- ▶ Options include HART 7 protocol, Profibus PA, or Foundation Fieldbus



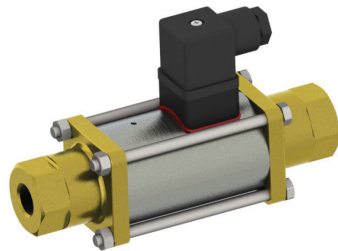


# OTHER VALVES

## OTHER VALVES

Our extensive selection includes various valves for demanding process industry applications. We are happy to assist in selecting the right product.

- ▶ Ball Valves
- ▶ Brass valves
- ▶ Safety valves
- ▶ Needle valves
- ▶ Diaphragm valves
- ▶ Hose valves
- ▶ Solenoid valves
- ▶ Coaxial valves
- ▶ Mud separators



## CUSTOMIZED VALVE PACKAGES

Majority of our valves are delivered from the factory fully automated. They might not fit in every need, thus we have our own assembly point in Helsinki, where we can assemble and modify valve packages according your needs with short notice.

Ask our sales team for more information!





# wexon

## WITH 50 YEARS OF EXPERTISE

Founded in 1974, our family business remains a domestic, independent operator not affiliated with any chains. We specialize in the import and sale of technical components. Our extensive product range covers various sectors of process industry, industrial automation, and measurement.

We operate throughout Finland, with offices in Helsinki, Turku, and Kuopio. Our Tallinn office serves customers in the Baltic countries. Wexon is part of the Wermundsen Group. The group's subsidiaries — Wexon, Solotop, Gistele, and Kovartek — are each market leaders in their respective business areas.

**Address:** Turvekuja 6, 00700 HELSINKI

**Phone:** +358 9 290 440 | **Email:** [wexon@wexon.fi](mailto:wexon@wexon.fi)

[wexon.fi](https://www.wexon.fi)



WERMUNDSEN

A Finnish family business since 1974.